



# COMMUNITY RISK MAPPING

## Design Principles

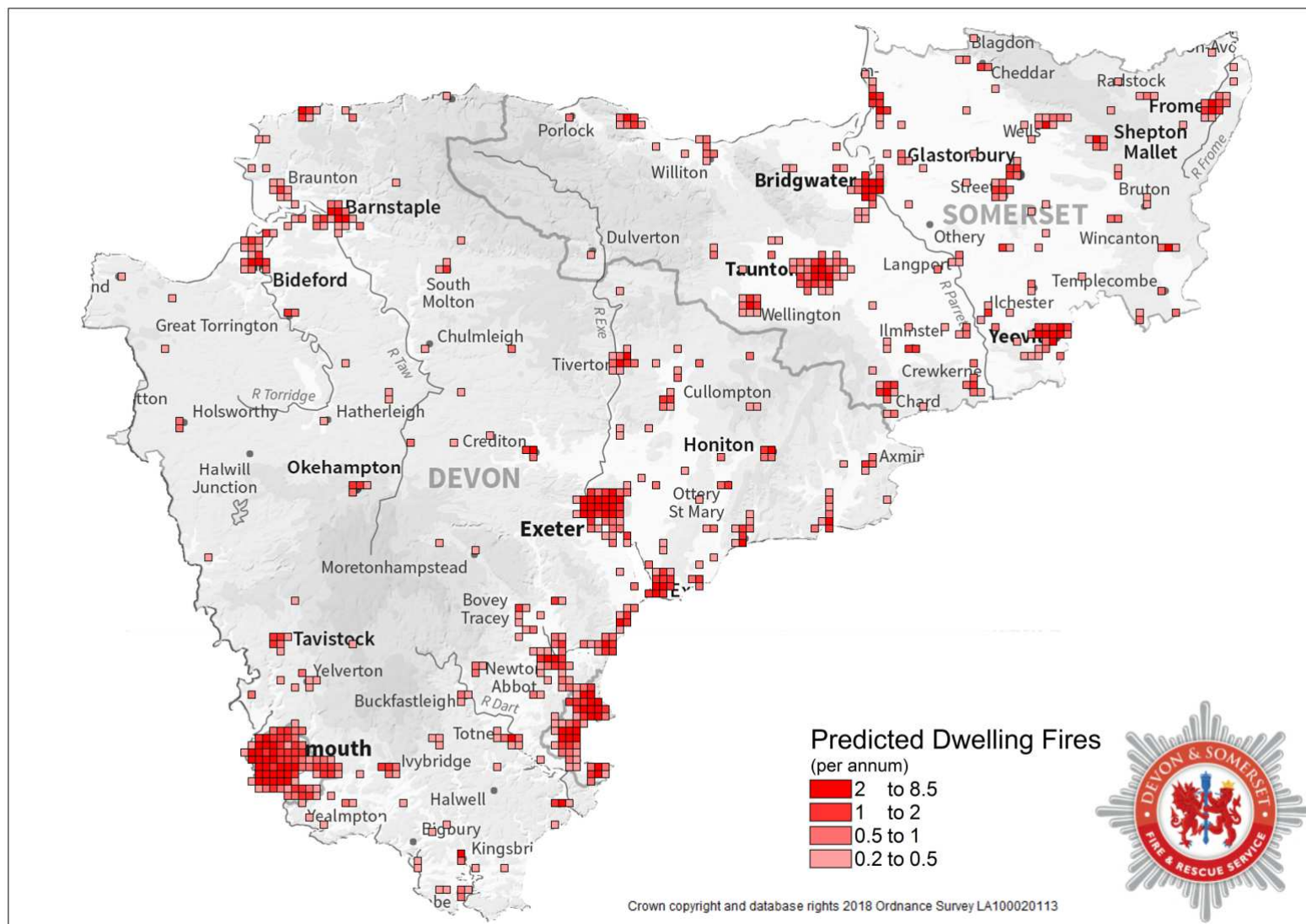
- Projects must mitigate against risks identified in either the IRMP (community risks) or the Fire and Rescue Plan (organisational risks) and preferably both.
- Projects must focus on delivering our statutory obligations as defined by the Fire and Rescue Services Act 2004 (i.e. fires and RTC's) and therefore align to the National Framework expectations.
- Projects must support the delivery of a long term balanced budget as described by the Medium Term Financial Plan.
- Projects that require significant investment must demonstrate a clear benefits realisation plan of either investing to save or investing to reduce risk or both.

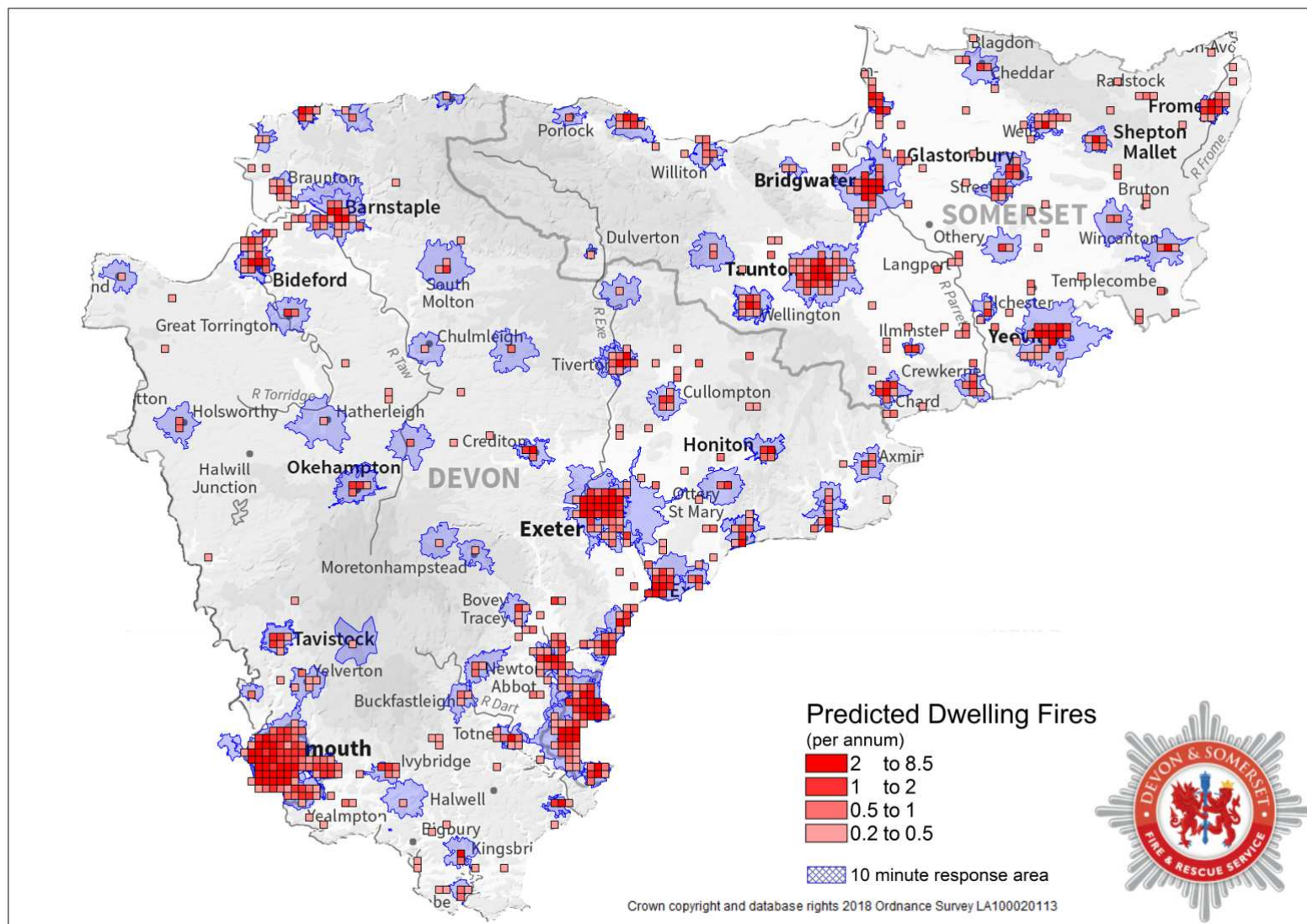


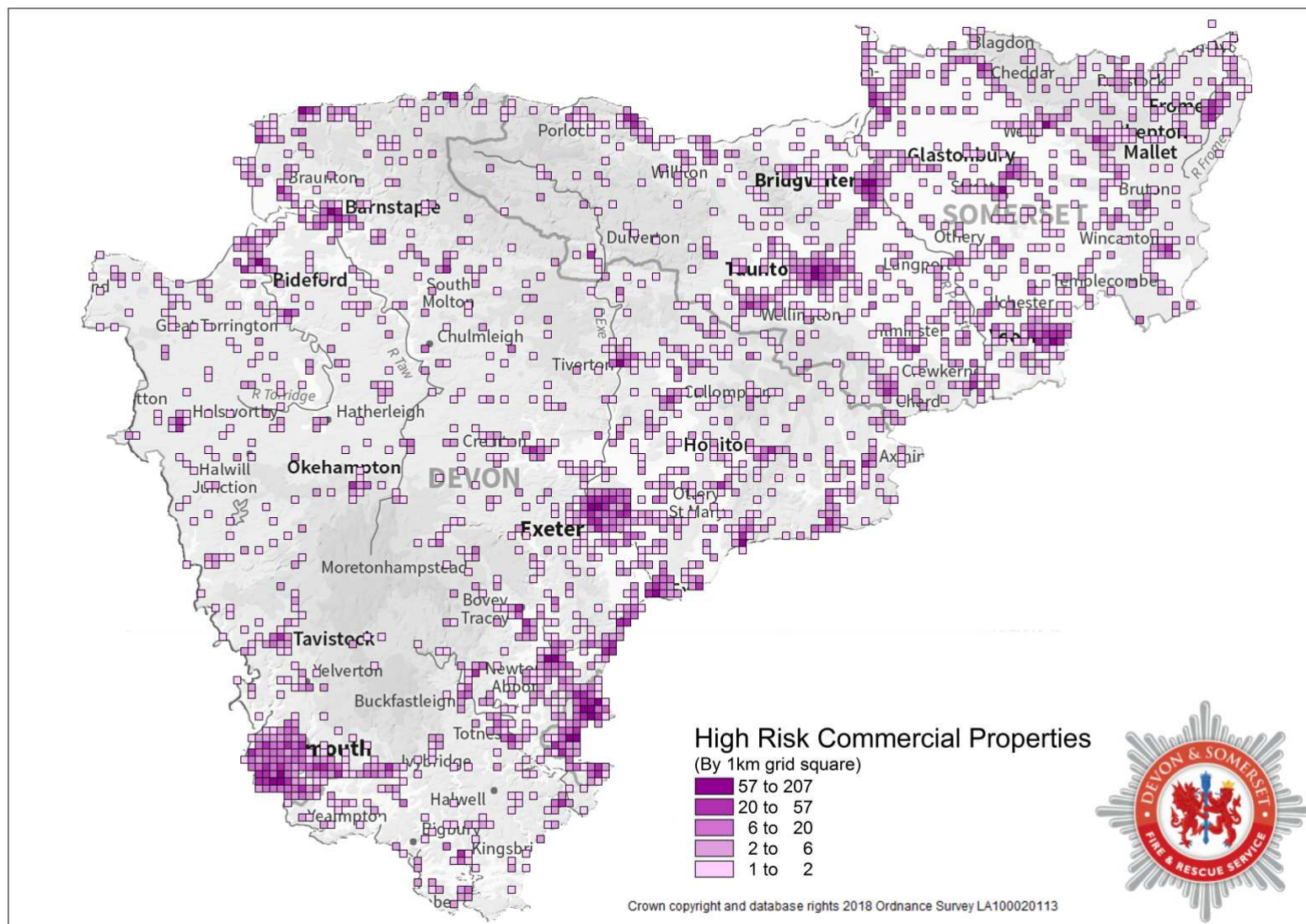
# COMMUNITY RISK MAPPING

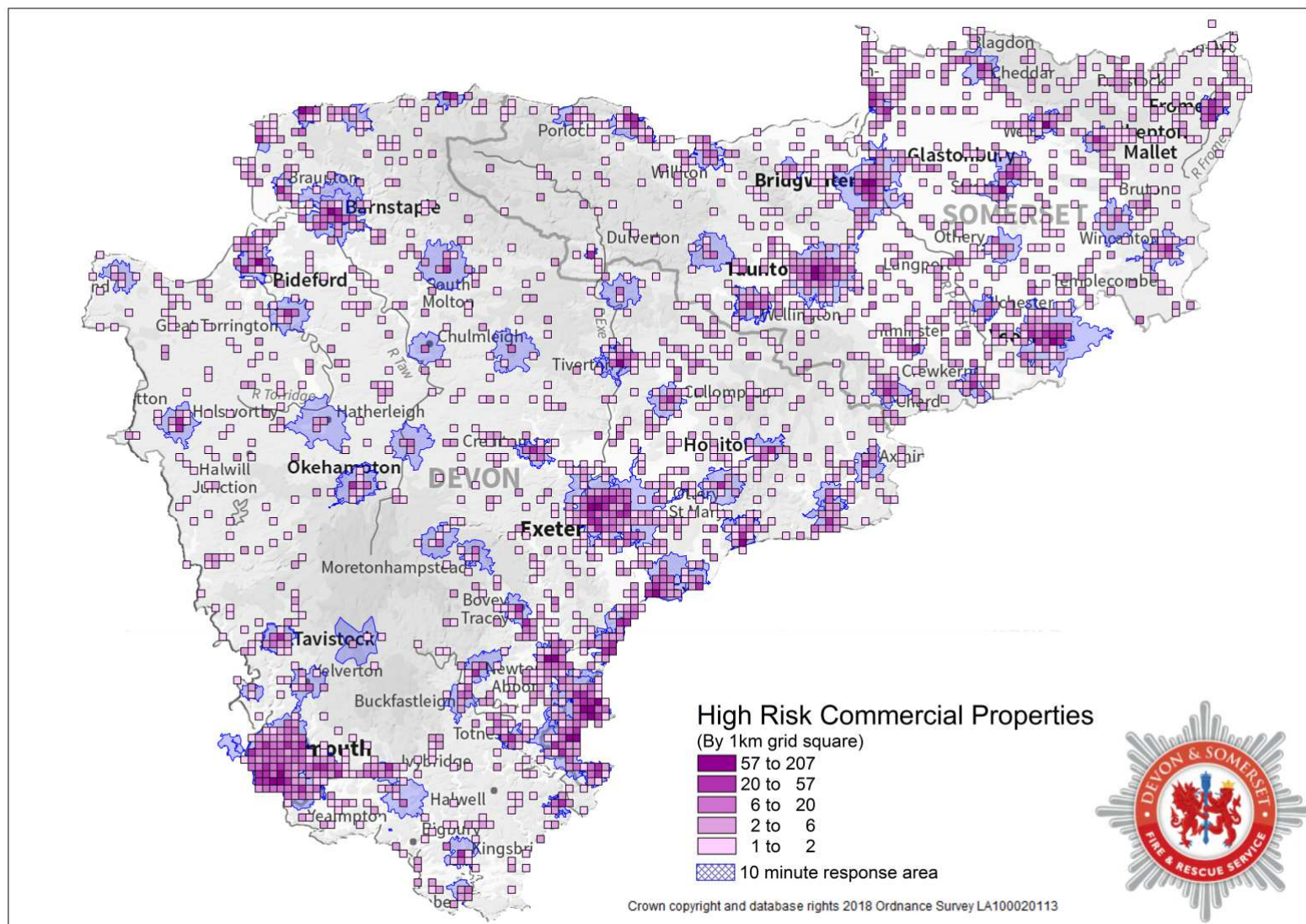
## Design Principles

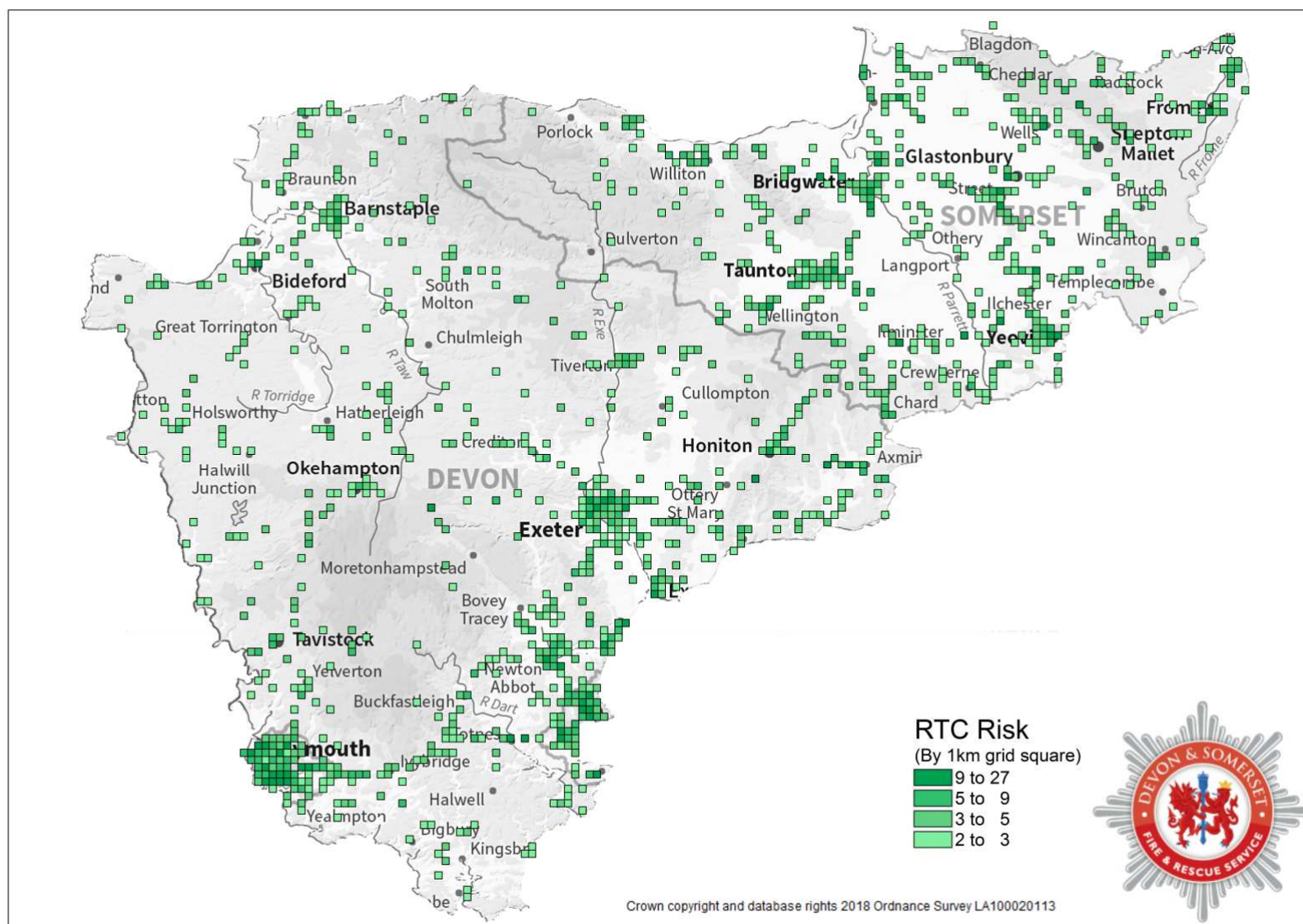
- Projects must consider the potential of collaboration with new and existing partners to provide either economies of scale or enhanced risk reduction or both.
- Projects must support inclusivity and flexibility of opportunity.
- Projects must clearly support the vision and values of the Service.

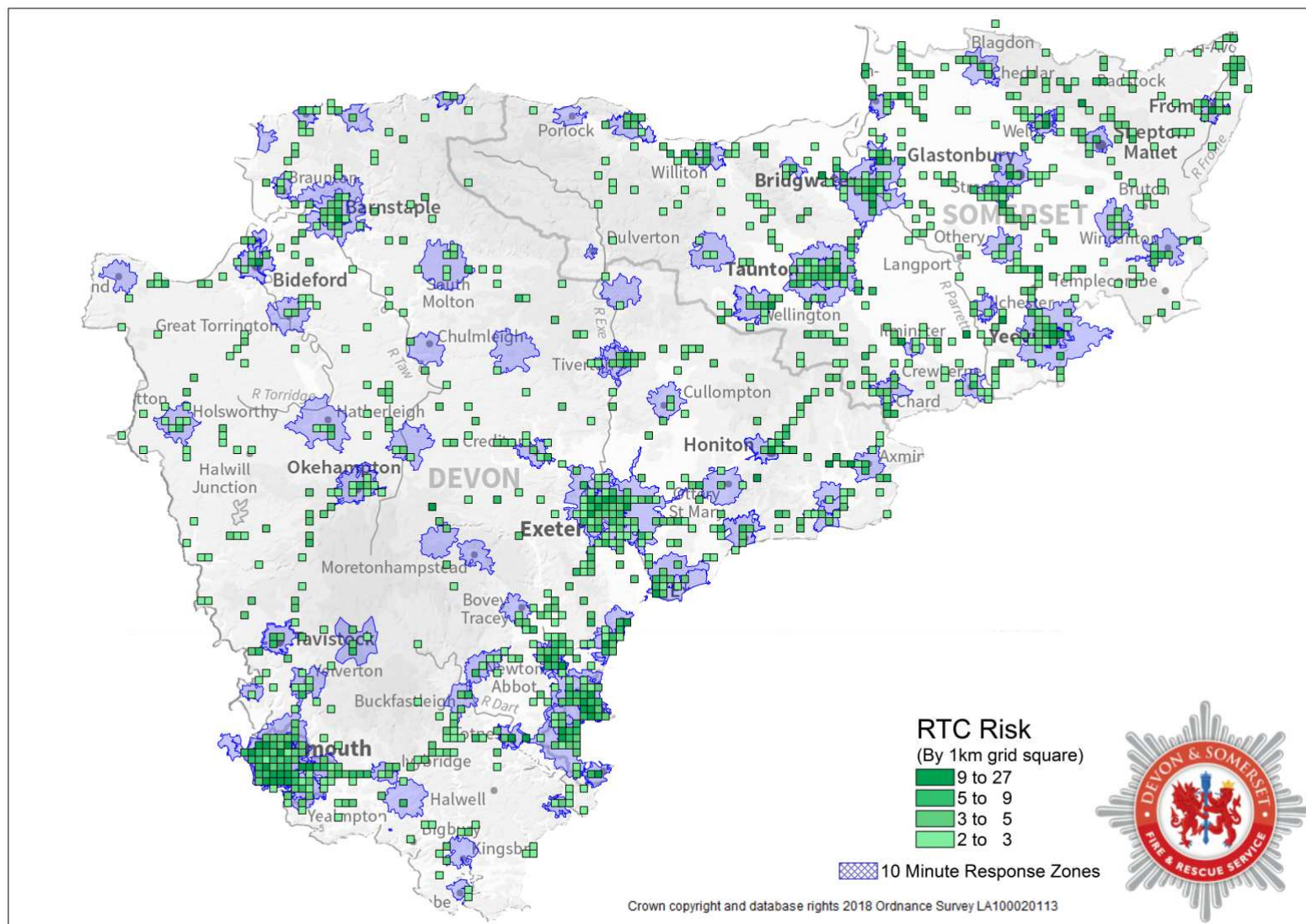








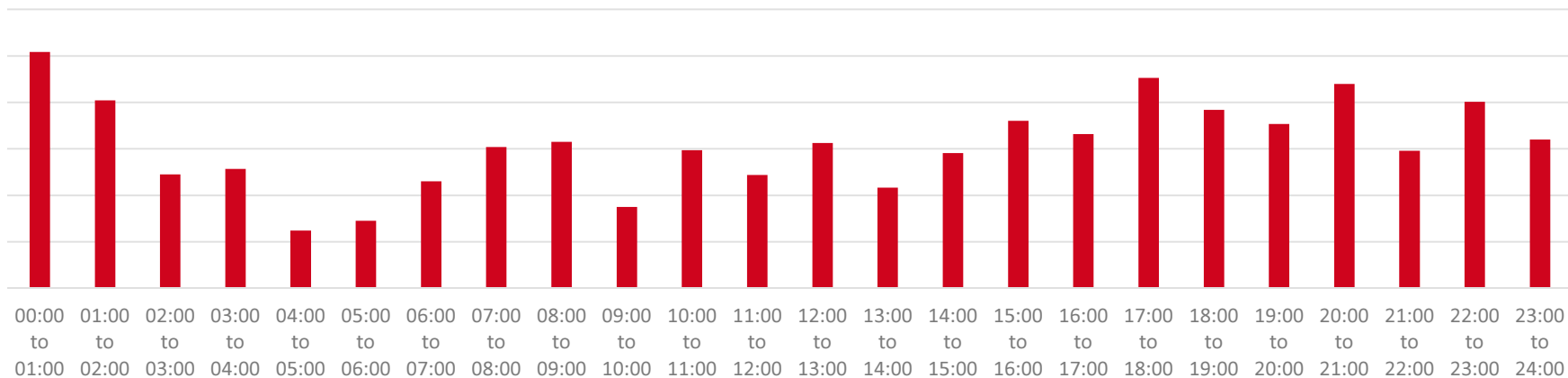








### Dwelling Risk



### RTC Risk

